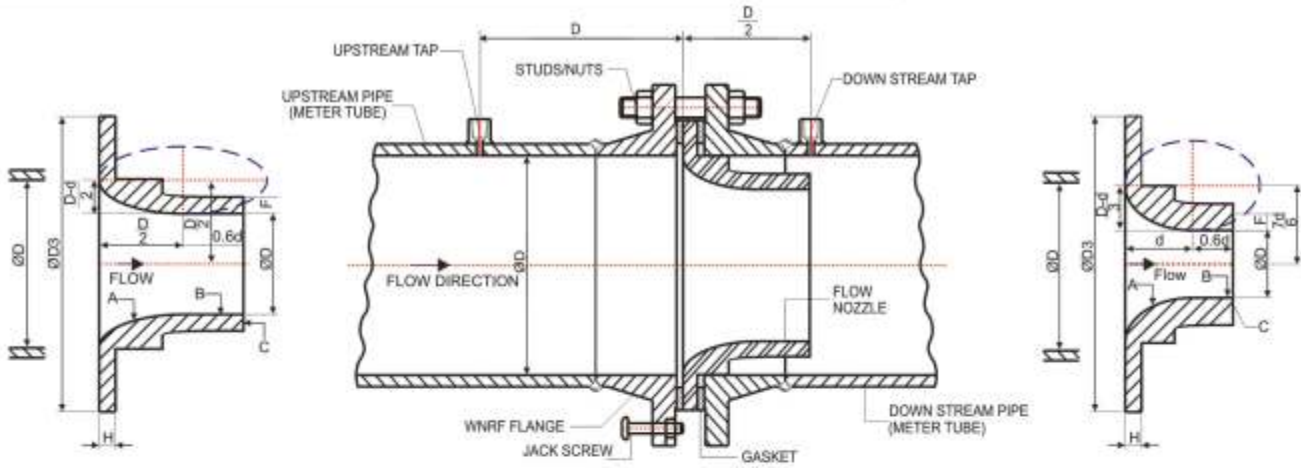


FN 400 # Series Long Radius Flow Nozzles - Flange Mounted



a) LONG RADIUS FLOW NOZZLES - High Beta Ratio $0.25 \geq \beta \geq 0.8$
DESIGN STANDARD
ISO 5167 / ASME MFC 3M

- A - Convergent Section; (quarter Of An Ellipse)
- B - Throat; Cylindrical Section
- C - Outlet Face
- Ød - Throat Diameter
- ØD - Pipe Internal Diameter
- ØD3- Nozzle Outer Diameter
- β - Beta Ratio = D/d

b) LONG RADIUS FLOW NOZZLES - Low Beta Ratio $0.20 \geq \beta \geq 0.5$
DESIGN STANDARD
ISO 5167 / ASME MFC 3M

The Flow Nozzle is inserted between the pipe Flanges so that, it is concentric with the inside diameter of the pipe. The Flow nozzle is designed for pipe wall taps at a distance of D & D/2 where D is pipe internal diameter. The Nozzle Flange can be furnished in any type of facing (raised, ring-joint, etc) as specified.

Code	Element Type
FNLH	Long Radius Flow Nozzle - High Beta
FNLL	Long Radius Flow Nozzle - Low Beta

Code	Element Material
F304/L	A182 Gr.F304/F304L
F316/L	A182 Gr.F316/F316L
F11	A182 Gr.F11
F12	A182 Gr.F12
Mo	Monel
Other	Please specify

Code	Companion Flange Details
XX	Define eg: 150NB 600# Sch.120 WNRFL

Code	Flange Material
A105	ASTM A105
F304/L	A182 Gr.F304/F304L
F316/L	A182 Gr.F316/F316L
F5	A182 Gr.F5
F11	A182 Gr.F11
F12	A182 Gr.F12
Other	Please specify

Code	Studs / Nuts & Jack Screw Mat1
B7/2H	A193 Gr.B7 / A194 Gr.2H
Other	(see Table-4)

Code	Option
0	None
1	IBR Form III C
Other	See Table-7

Code	Meter Tube
	Define Size; eg 150NB Sch.120
A106	A106 Gr.B
P11	A335 Gr.P11
P12	A335 Gr.P12
316L	A312 TP 316/316L
Other	Please specify
XX	Not Applicable

Code	Pressure Tapping Connection
3N	1/2" NPT(F)
4N	1/2" NPT(F)
1B	1/2" BSP(F)
2B	1/2" BSP(F)
1T	Other (see Table-6)

Code	Gasket Material
G1	CAF
G2	(SS304+CAF)
G3	(SS316+CAF)
Other	Select from Table 5

Code	Gasket Type
FR	Flat Ring
SP	Spiral Wound
Other	Please Define

ORDERING INFORMATION

FN400#SERIES FNLH-F304-150NB 600# S120 WNRFL-A105-B7/2H-SP-G3-3N-P11-O1