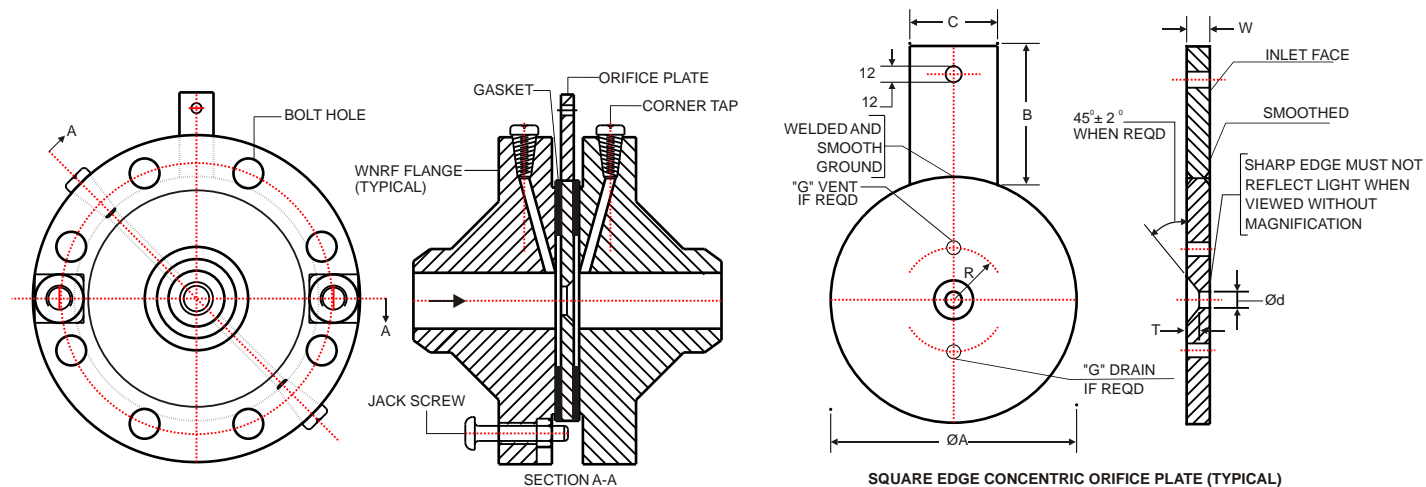


FE 410 WN # Series Orifice Assembly with Corner Taps



This is similar to FE400 WN# Series except the Pressure Tappings provided are of Corner Taps. The Tap Hole opening is as close as possible to the Orifice Plate's face, so that the reading of the DP becomes easier. This is the case, where DP value is small and where the pipe sizes are smaller. The Tapping can also be provided by machining the annual grooves into the Flanges as per Bs1042 or ISO 5167 standards. For the line sizes 2" and below, the Corner Tappings are recommended. The Flange bore is maintained equal to the Pipe ID and its surface finish as per ISO 5167. The Flanges are as per ANSI B16.36, DIN, BS, API etc. IBR, NACE, HIC and any other Certifications are given as per the customer demands

Code	Element Type / Orifice Type
SEC	Square Edge Concentric
QE	Quadrant Edge
CE	Conical Entrance
EC	Eccentric
SG	Segmental

Code	Element Material
304/L	AISI 304 / 304 L
316/L	AISI 316 / 316 L
321	AISI 321
347	AISI 347
Mo	Monel 400
INC6	Inconel-600
Hb/Hc	Hastelloy B/C
Other	Please specify

Code	Element Thickness
W1	3.175 mm
W2	6.350 mm
W3	9.52 mm
W4	12.7 mm
W5	Other

Code	Flange Size & Rating
XX	Define eg: 25 NB 300# Refer Table-1

Code	Flange Type
WN	Weld Neck
SO	Slip On
SW	Socket Weld
Th	Threaded

Code	Flange Facing
RF	Raised Face
FF	Flat Face
Other	Refer Table-8

Code	Flange Bore / Pipe Sch.
XX	Define eg: Sch.80 (Refer Table-3)

Code	Option
0	None
1	IBR Form III C
Other	See Table 7

Code	Pressure Tapping Connection
3N	½" NPT(F)
4N	¾" NPT(F)
1B	½" BSP(F)
2B	¾" BSP(F)
1T	Other (see Table-6)

Code	Gasket Material
G1	CAF
G2	(SS304+CAF)
G3	(SS316+CAF)
Other	Select from Table 5

Code	Gasket Type
FR	Flat Ring
SP	Spiral Wound
Other	Please Define

Code	Studs / Nuts & Jack Screw Mat'l
B7/2H	A193 Gr.B7 / A194 Gr.2H
Other	(see Table-4)

Code	Flange Material
A105	ASTMA105
F304/L	A182 Gr.F304/F304L
F316/L	A182 Gr.F316/F316L
F321	A182 Gr.F321
F5	A182 Gr.F5
F11	A182 Gr.F11
F12	A182 Gr.F12
LF2	A350 Gr.LF2
LF3	A350 Gr.LF3
Other	Please specify

ORDERING INFORMATION

FE410 WN# Series SEC-316-W1-25NB 300# WN-RF-Sch.80-F316-B7/2H-FR-G1-3N-O0

GOA THERMOSTATIC INSTRUMENTS PVT. LTD.

Office: Flat B, Ground Floor, Hill Crown Apt., College Road, Mapusa - 403 507, Tel: 0832-2252719, Fax:0832-2263294 E-mail: pyroadmin@pyro-electric.in

Visit us at www.pyro-electric.in

FE 410 WN # Series