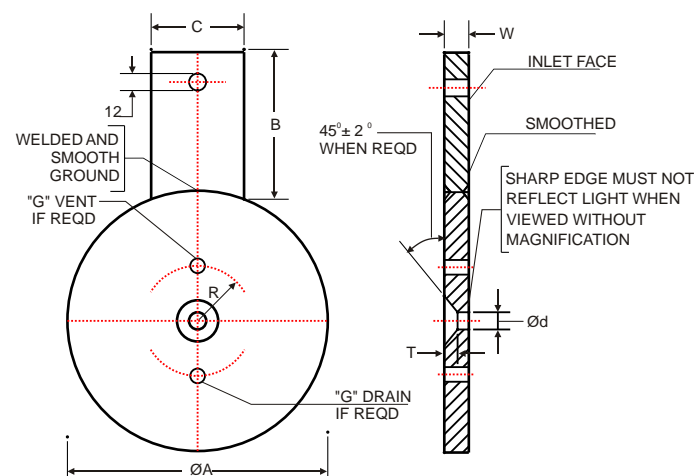
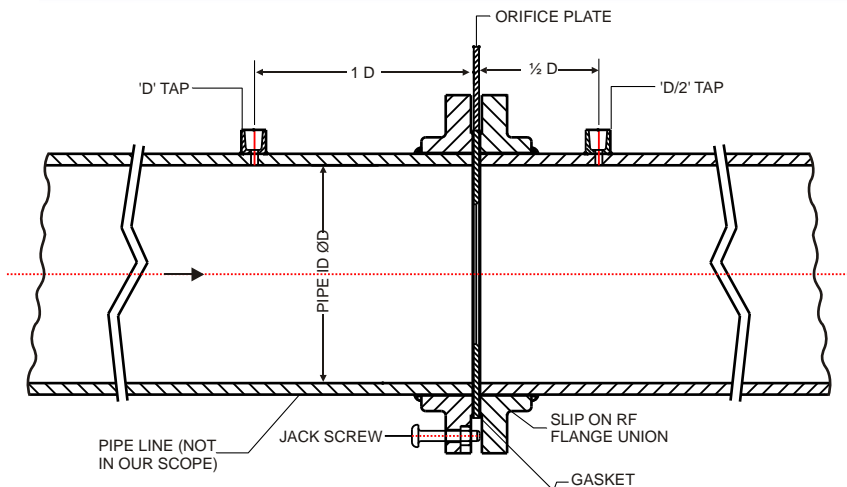


FE 440 SO # Series Orifice Assembly with D-D/2 Taps



SQUARE EDGE CONCENTRIC ORIFICE PLATE (TYPICAL)

The Taps are located at 1 Pipe Internal Diameter upstream the Orifice Plate and at 1/2 Pipe Internal Diameter downstream the Orifice Plate. These taps are also called as Radius Taps and are largely replaced by Vena Contracta Taps. The pipe line sizes of 10" and above are recommended to have these taps. The Tap location normally comes on the pipe wall and not into the Flanges. The Flanges can be supplied with the IBR / NACE Certification on demand. The Flange dimensions shall be as per the Standards ANSI B16.36 / ANSI B16.5, JIS, BS, DIN, API etc.,

Code	Element Type / Orifice Type
SEC	Square Edge Concentric
QE	Quadrant Edge
CE	Conical Entrance
EC	Eccentric
SG	Segmental

Code	Element Material
304/L	AISI 304 / 304 L
316/L	AISI 316 / 316 L
321	AISI 321
347	AISI 347
Mo	Monel 400
INC6	Inconel-600
Hb/Hc	Hastelloy' B/C
Other	Please specify

Code	Element Thickness
W1	3.175 mm
W2	6.350 mm
W3	9.52 mm
W4	12.7 mm
W5	Other

Code	Flange Size & Rating
XX	Define eg; 25 NB 300# Refer Table-1

Code	Flange Type
SO	Slip on

Code	Flange Facing
RF	Raised Face
FF	Flat Face
Other	Refer Table-8

Code	Flange Bore / Pipe Sch.
XX	Define eg; Sch.80 (Refer Table-3)

Code	Option
0	None
1	IBR Form IIIC
Other	See Table 7

Code	Pressure Tapping Connection
3N	1/2" NPT(F)
4N	3/4" NPT(F)
1B	1/2" BSP(F)
2B	3/4" BSP(F)
1T	Other (See Table-6)

Code	Gasket Material
G1	CAF
G2	(SS304+CAF)
G3	(SS316+CAF)
Other	Select from Table 5

Code	Gasket Type
FR	Flat Ring
SP	Spiral Wound
Other	Please Define

Code	Studs / Nuts & Jack Screw Mat'l
B7/2H	A193 Gr.B7 / A194 Gr.2H Other (see Table-4)

Code	Flange Material
A105	ASTM A105
F304/L	A182 Gr.F304/F304L
F316/L	A182 Gr.F316/F316L
F321	A182 Gr.F321
F5	A182 Gr.F5
F11	A182 Gr.F11
F12	A182 Gr.F12
LF2	A350 Gr.LF2
LF3	A350 Gr.LF3
Other	Please specify

ORDERING INFORMATION

FE440 SO# Series SEC-316-W1-250NB 150# SO-RF-Sch.20-A105-B7/2H-FR-G1-3N-O0

GOA THERMOSTATIC INSTRUMENTS PVT. LTD.

Office: Flat B, Ground Floor, Hill Crown Apt., College Road, Mapusa - 403 507, Tel: 0832-2252719, Fax:0832-2263294 E-mail: pyroadmin@pyro-electric.in

Visit us at www.pyro-electric.in

FE 440 SO # Series